

ALPINE TRANSITION+
EDUCATION CENTER
350 N STATE ST

144 FIBER IN
UDOT CONDUIT

MILEPOST 343.15

12 FIBER IN
1.25" CONDUIT

CENTRACOM HANDHOLE
UDOT HANDHOLE

290 W

200 N

200 N

135 W

PROPOSED
HANDHOLE

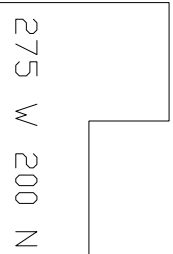
455'

PROPOSED
CONDUITS (2)

PROPOSED
HANDHOLE

ROAD
CROSSING
(100')

PREMIER FAMILY
MEDICAL LINDON



343.0
MILEPOST



CentraCom, MC198176: Proposed conduit path to Premier Family Medical Lindon location, 275 W 200
North. Crossing US 89 at milepost 343.

