

- 0034
- 0550
- 0803
- 0897
- 0822
- 0815
- 0837
- 0038
- 0817
- 0821
- 0823
- 0064
- 0223

INTREPID POTASH
 2.5 MILES E FRONTAGE ROAD
 3200 E INTREPID POTASH

PROPOSED
 HANDHOLE

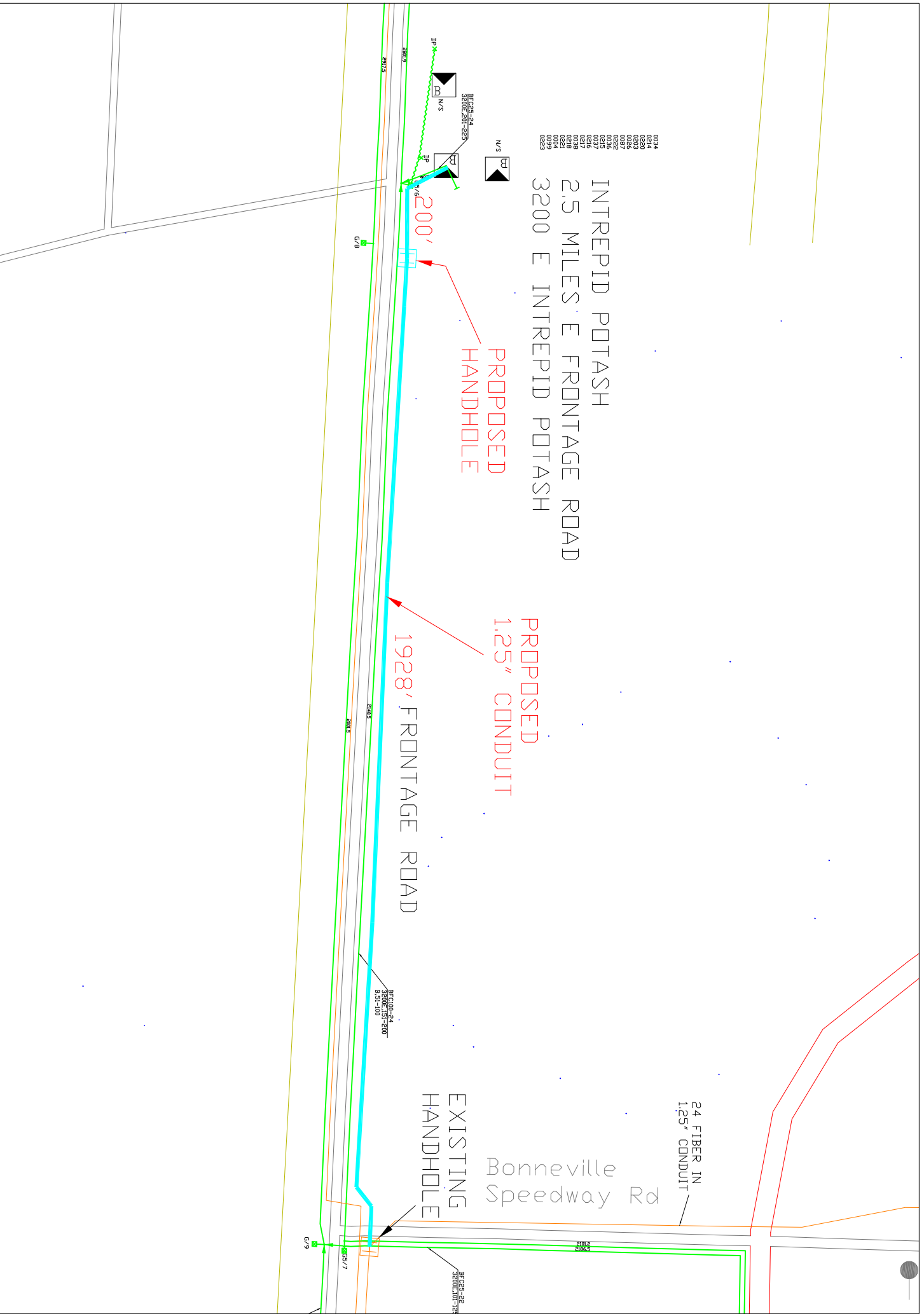
PROPOSED
 1.25" CONDUIT

1928' FRONTAGE ROAD

24 FIBER IN
 1.25" CONDUIT

Bonneville
 Speedway Rd

EXISTING
 HANDHOLE



CentraCom, MC183006: Proposed 1.25" conduit to Intrepid Potash,
 located 2.5 miles along the frontage road east of Wendover.

