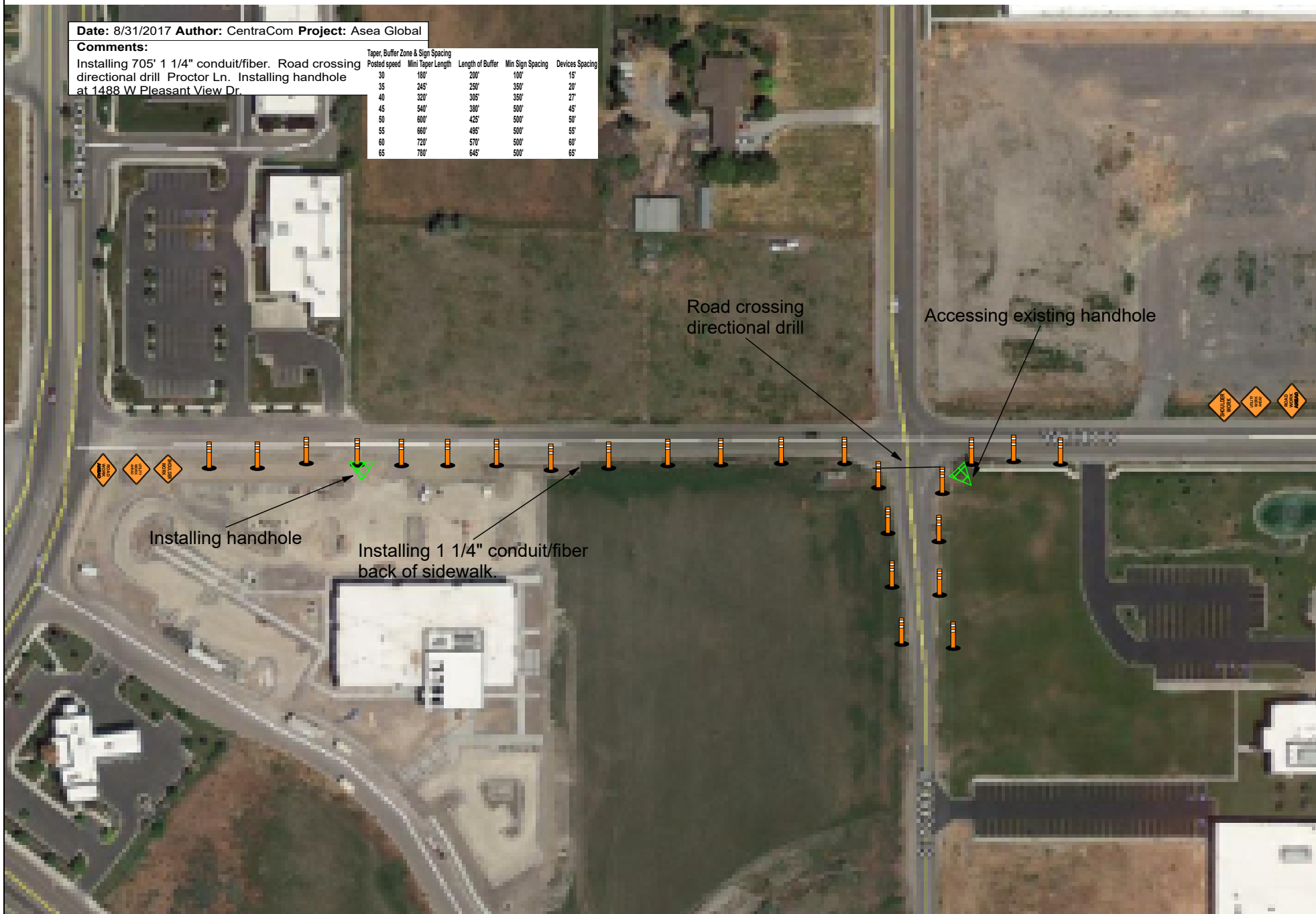


Date: 8/31/2017 Author: CentraCom Project: Asea Global

Comments:

Installing 705' 1 1/4" conduit/fiber. Road crossing directional drill Proctor Ln. Installing handhole at 1488 W Pleasant View Dr.

Taper, Buffer Zone & Sign Spacing			
Posted speed	Mini Taper Length	Length of Buffer	Min Sign Spacing
30	100'	200'	100'
35	245'	250'	350'
40	320'	305'	350'
45	540'	300'	500'
50	600'	425'	500'
55	660'	495'	500'
60	720'	570'	500'
65	780'	645'	500'



Installing handhole

Installing 1 1/4" conduit/fiber back of sidewalk.

Road crossing directional drill

Accessing existing handhole

