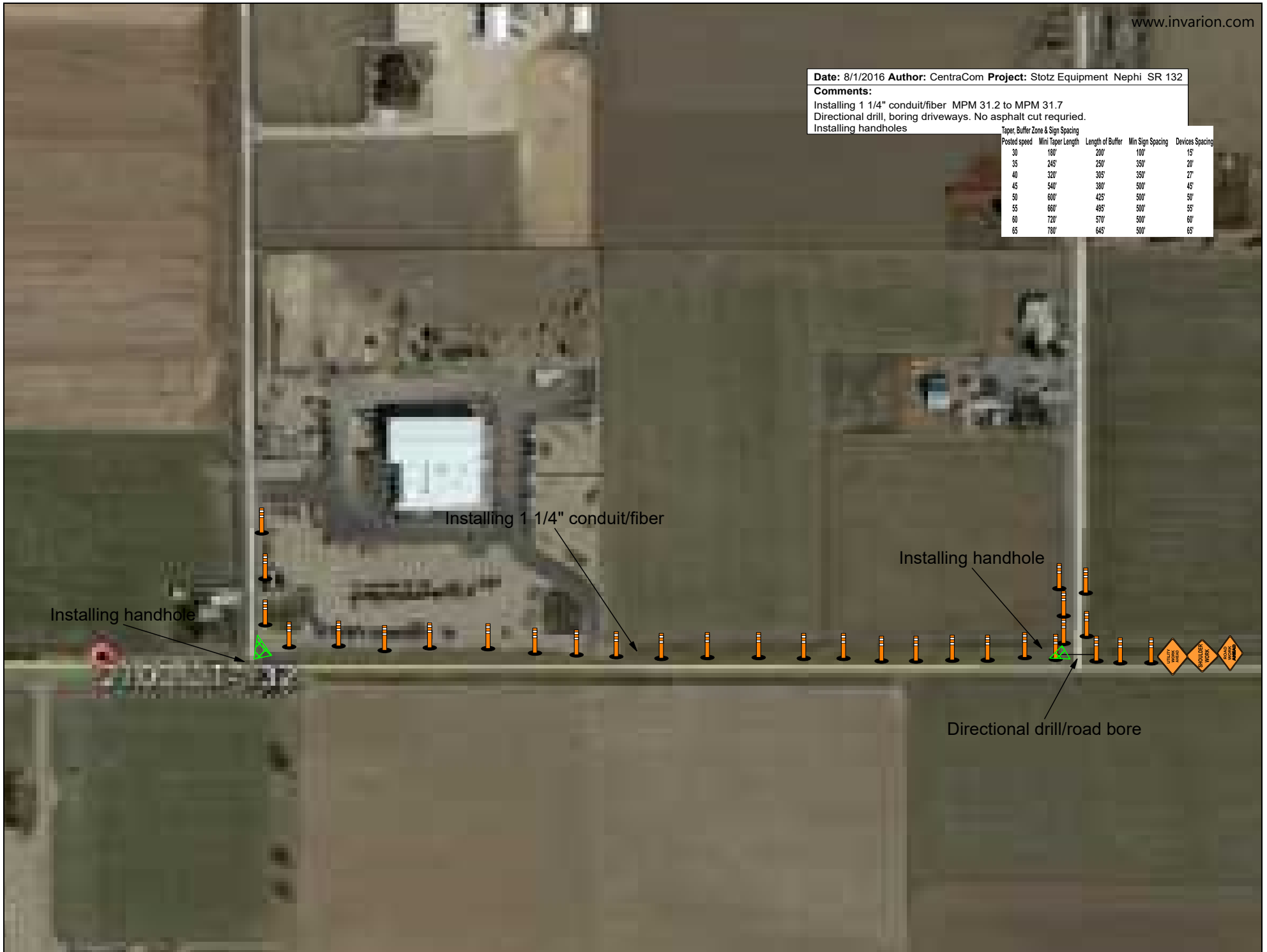


Date: 8/1/2016 Author: CentraCom Project: Stotz Equipment Nephi SR 132

Comments:

Installing 1 1/4" conduit/fiber MPM 31.2 to MPM 31.7
Directional drill, boring driveways. No asphalt cut required.
Installing handholes

Taper, Buffer Zone & Sign Spacing				
Posted speed	Mini Taper Length	Length of Buffer	Min Sign Spacing	Devices Spacing
30	180'	200'	100'	15'
35	245'	250'	350'	20'
40	320'	305'	350'	27'
45	540'	380'	500'	45'
50	600'	425'	500'	50'
55	660'	495'	500'	55'
60	720'	570'	500'	60'
65	780'	645'	500'	65'



Installing handhole

Installing 1 1/4" conduit/fiber

Installing handhole

Directional drill/road bore

