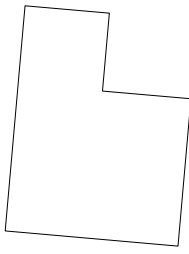


STOTZ EQUIPMENT

14750 PONY EXPRESS RD



ROAD CROSSING  
(30')

14800 S.

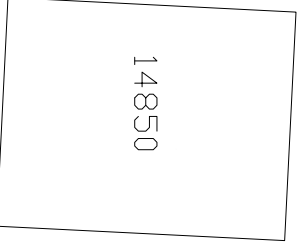
PROPOSED HANDHOLE



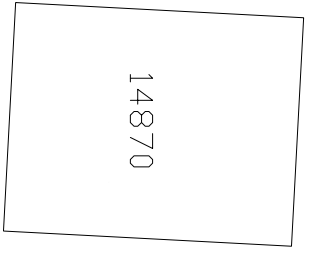
Pony Express Rd.

PROPOSED 1.25" CONDUIT

450'



14850



14870

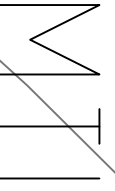
72 FIBER (2116')  
IN UDOT CONDUIT



BB/74

115

1159



CentraCom, MCI 6864: Proposed conduit path to Stotz Equipment, 14750 Pony Express Rd, Bluffdale, UT.

