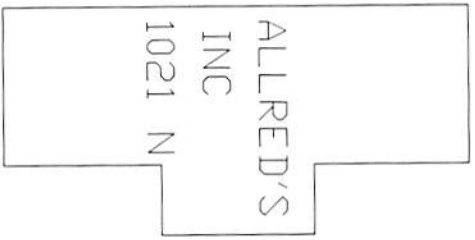


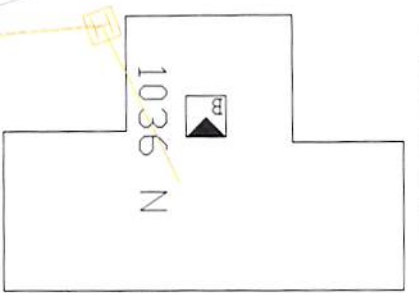
1061 N



ALLRED'S
INC
1021 N

ACCESS
EXISTING
CONDUIT

PETERSON
PLUMBING



1036 N

48 FIBER IN
1.25" PLUS
EMPTY 1.25"

975 N

972 N

965 N

930 N

931 N

922 N

1500

1430 West

CentraCom, MCI6861: Handhole access map for Allred's Inc., 1021 N 1430 W, Orem, UT.

