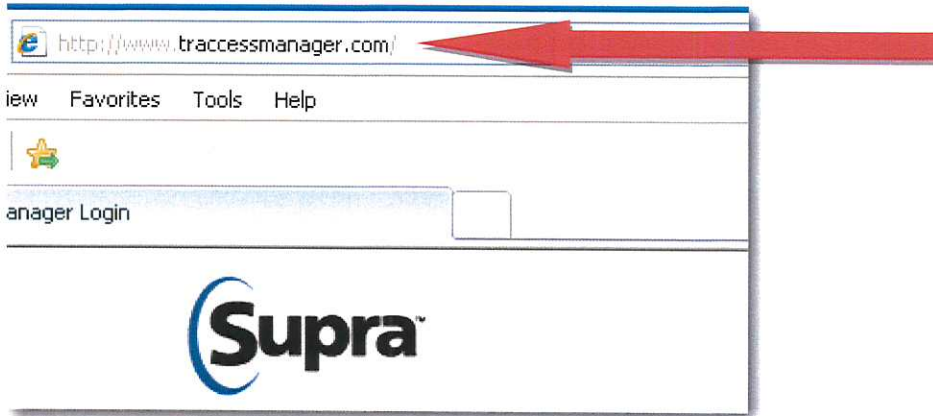
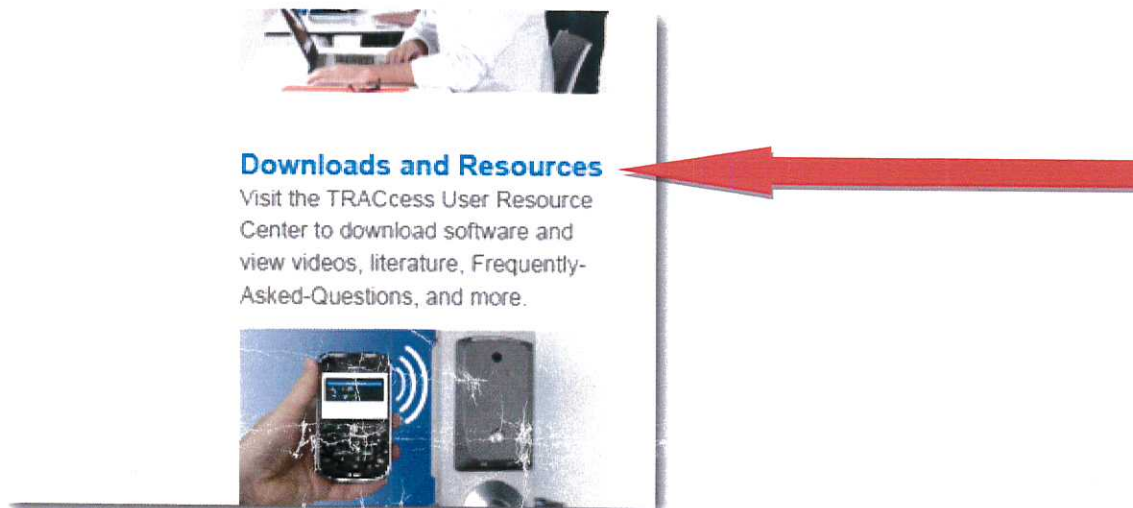


Before you begin remove the key from the cradle and do not plug in the USB Cradle.

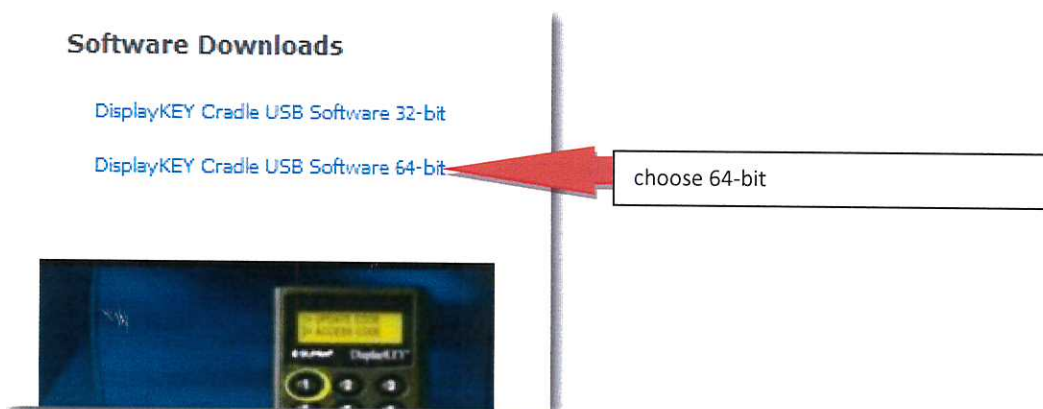
1. Logon to your computer (wait until system is totally up)
2. Open your Internet explorer
 - a) In the address bar type <http://www.traccessmanager.com>



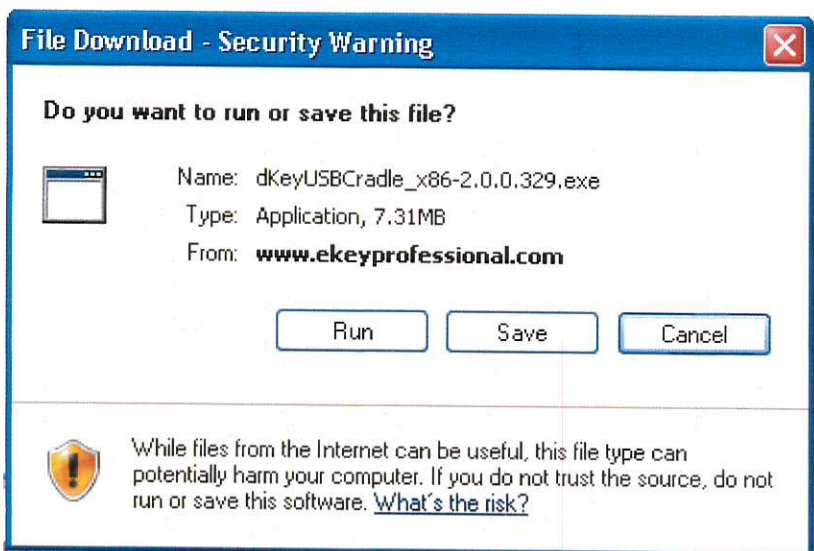
3. On the right side of the page click on the **Download and Resources** link.



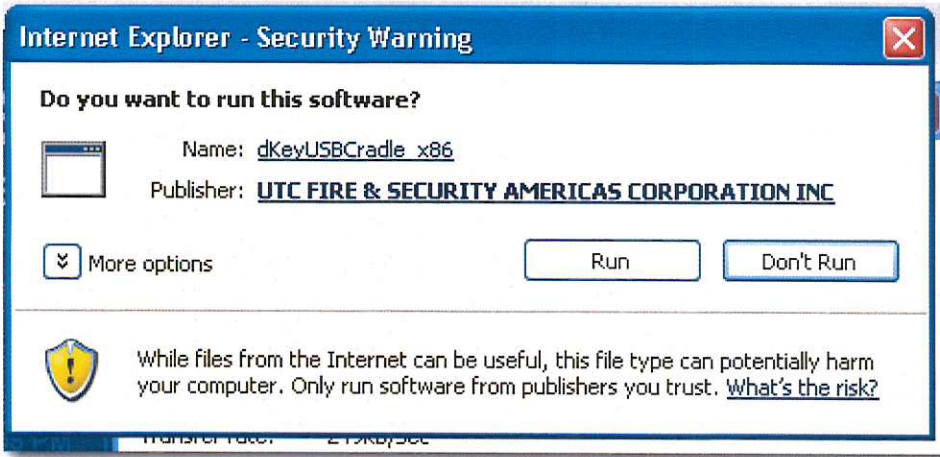
4. Again on the right side of the page choose what version you want to install.



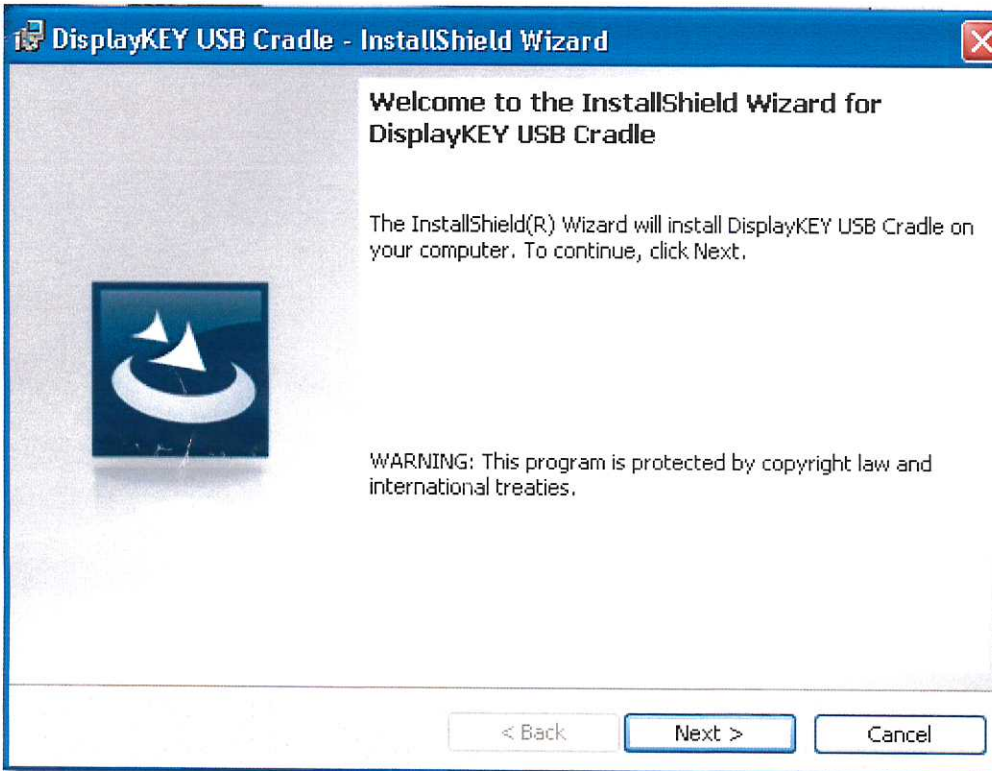
5. Click Run



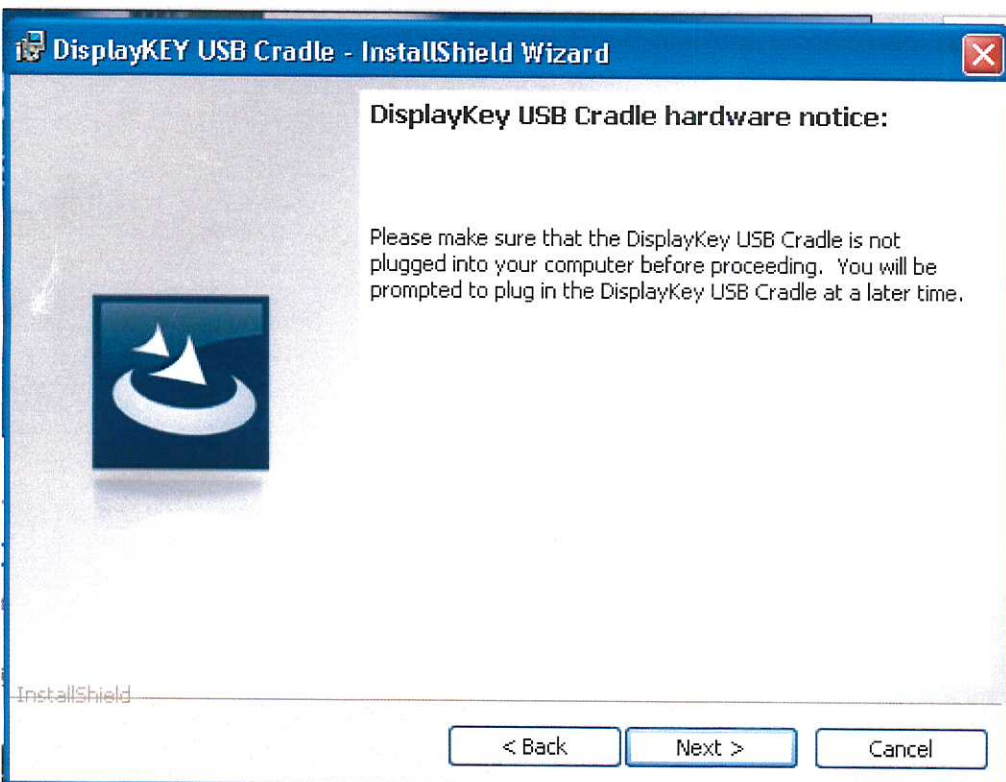
6. Click Run



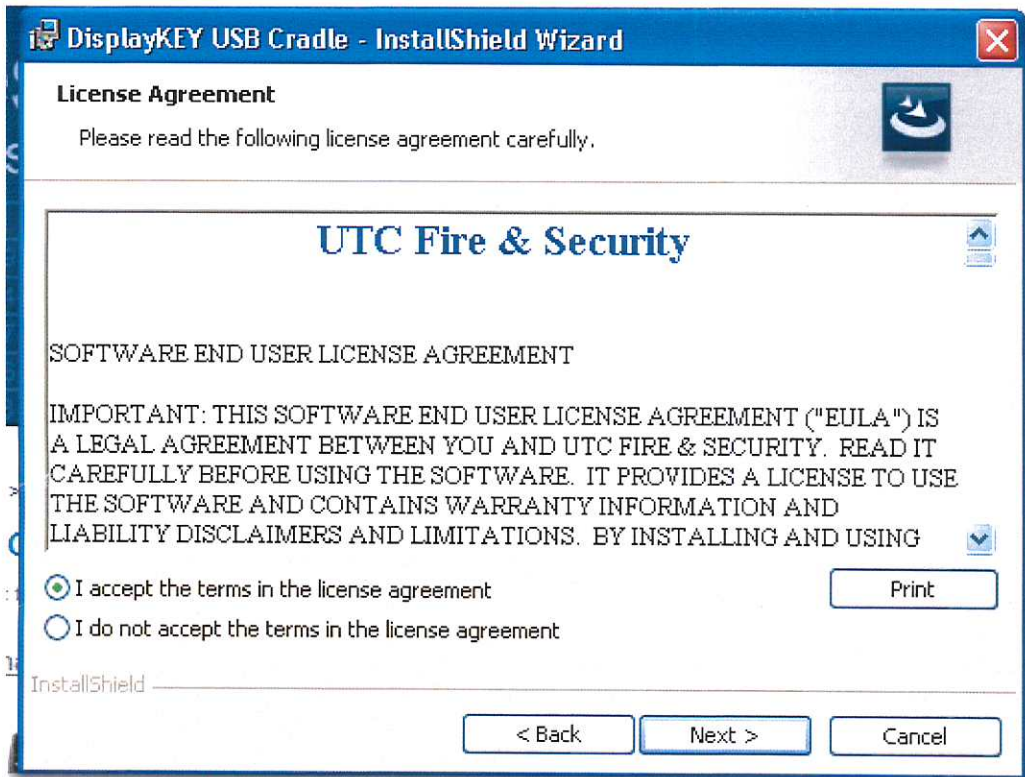
7. Click Next



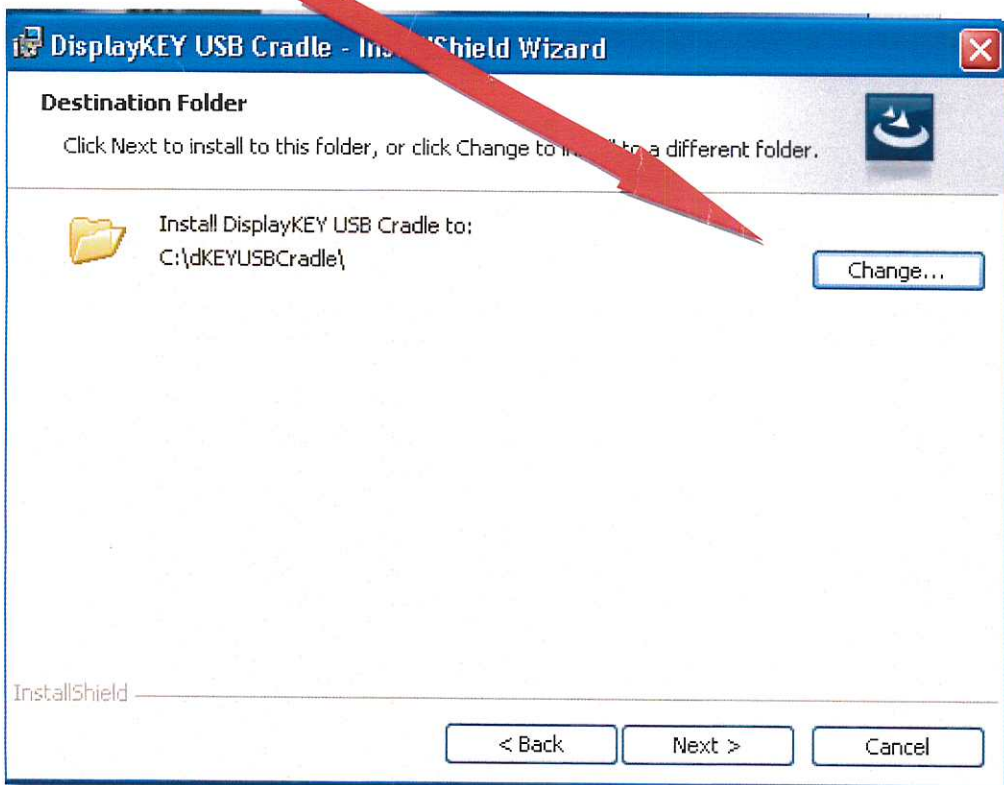
8. Click Next



9. Click I accept ... and then click Next



10. Click Change

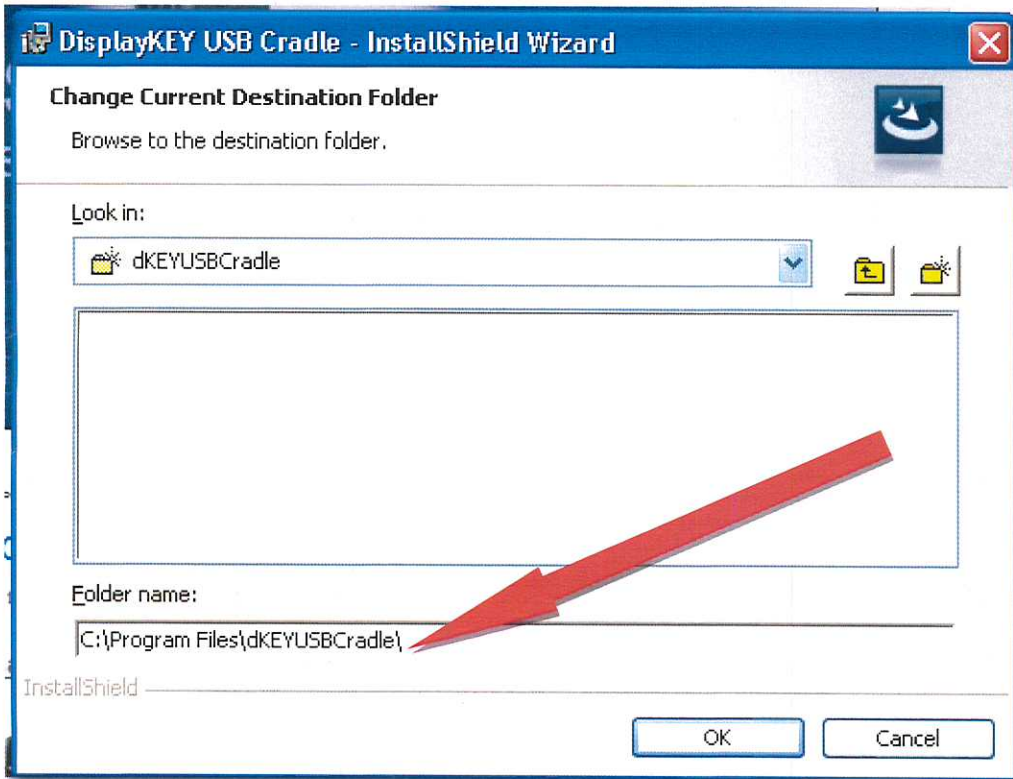


11. **Carefully** type C:\Program Files\dKEYUSBCradle\

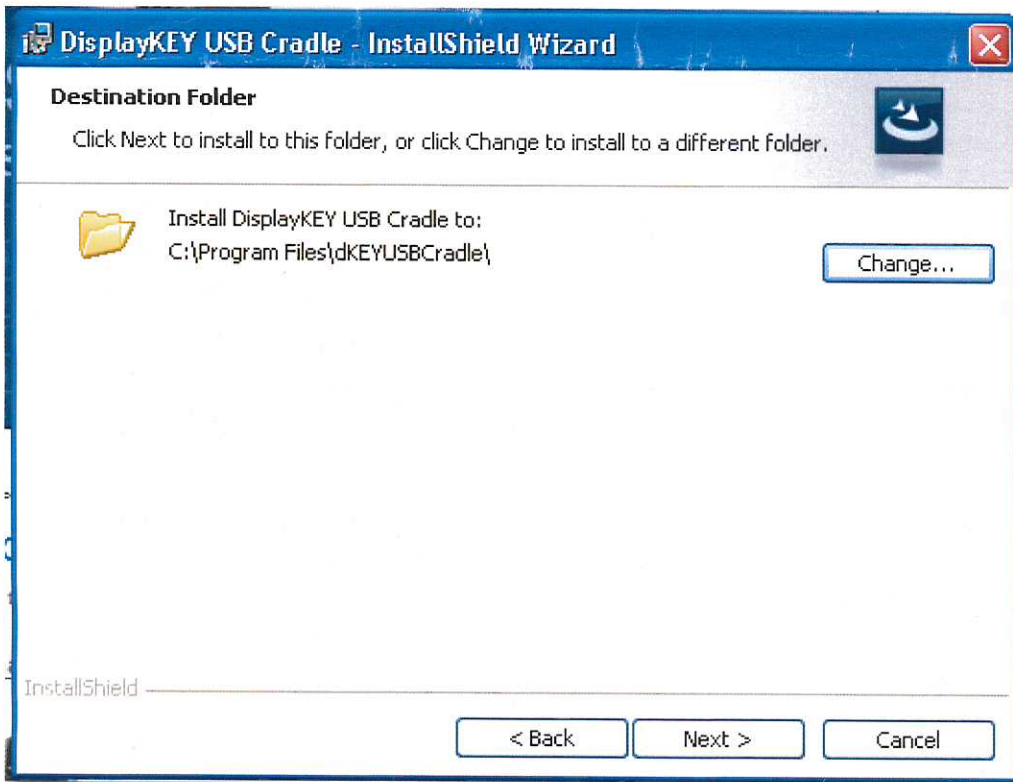
!!!!!!!!!! THIS IS CASE SENCITIVE !!!!!!!!!!!

a. It should read C:\Program Files\dKEYUSBCradle\

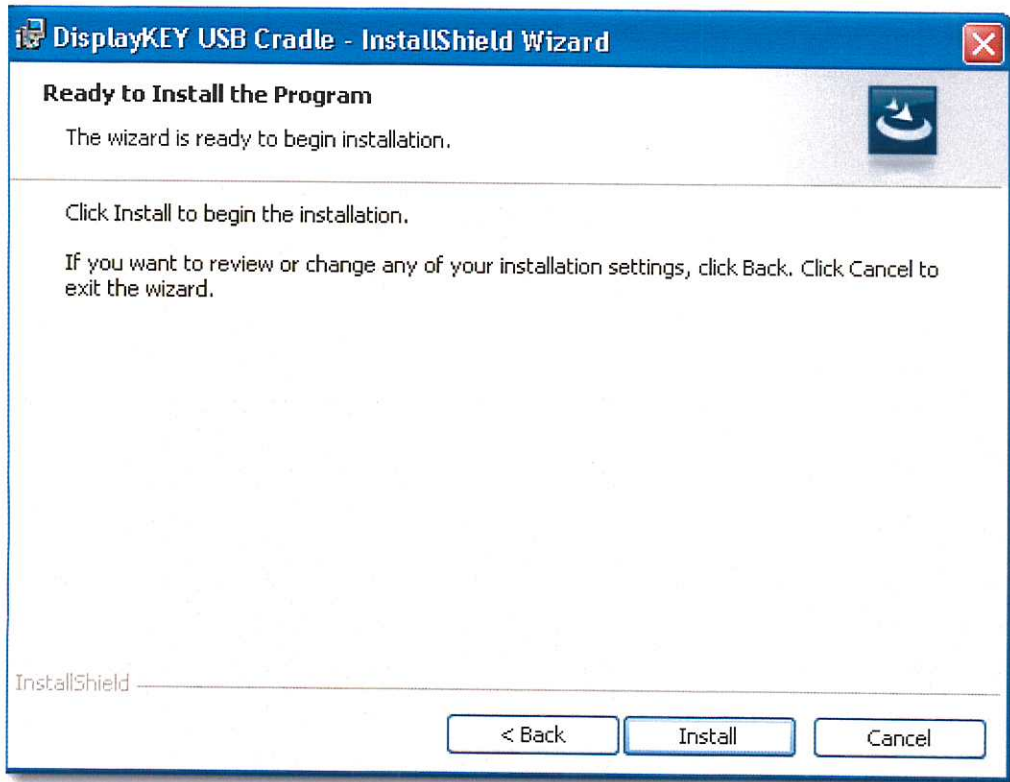
b. Click OK



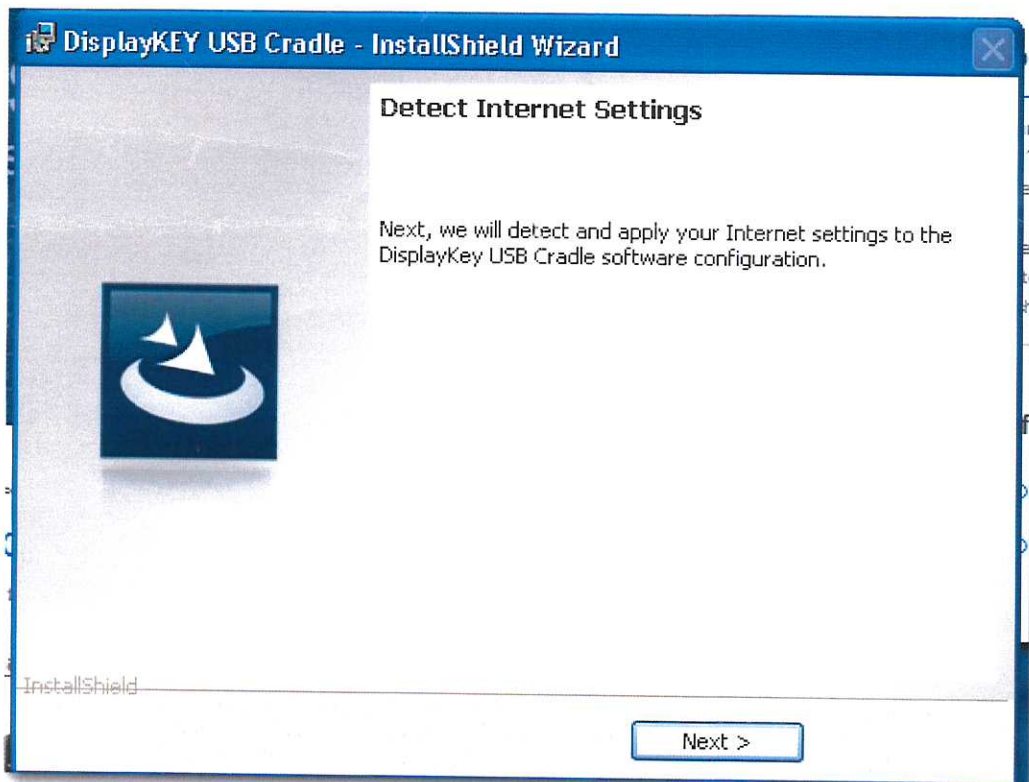
12. Click Next



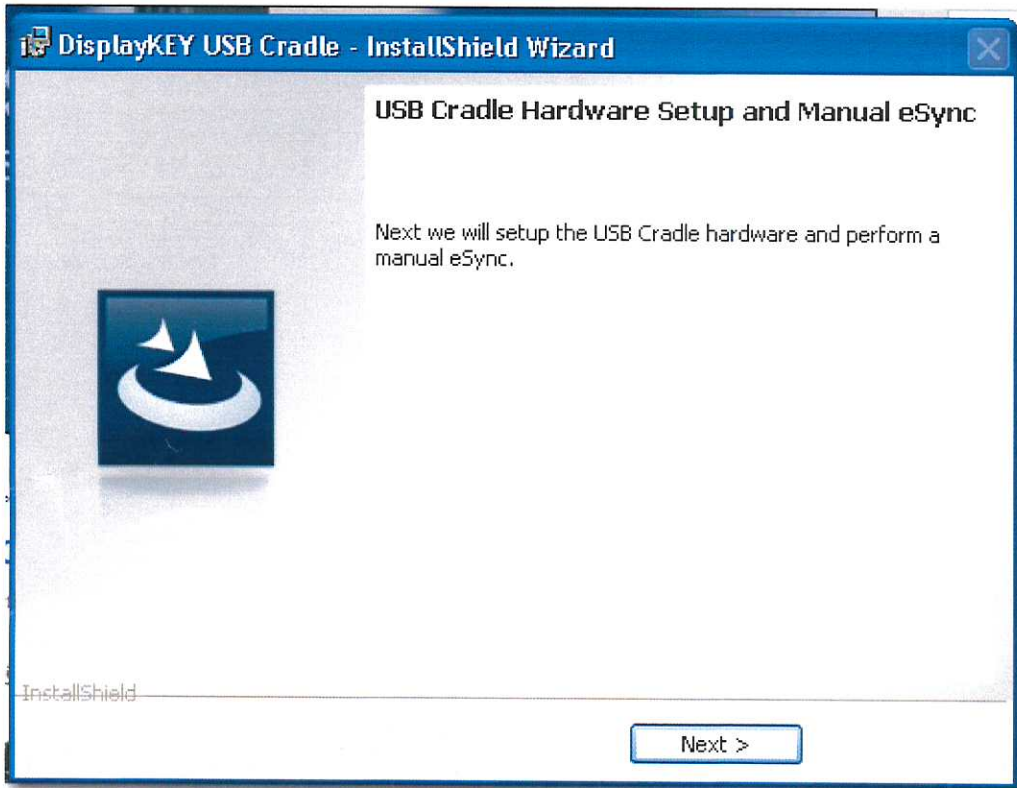
13. Click Install



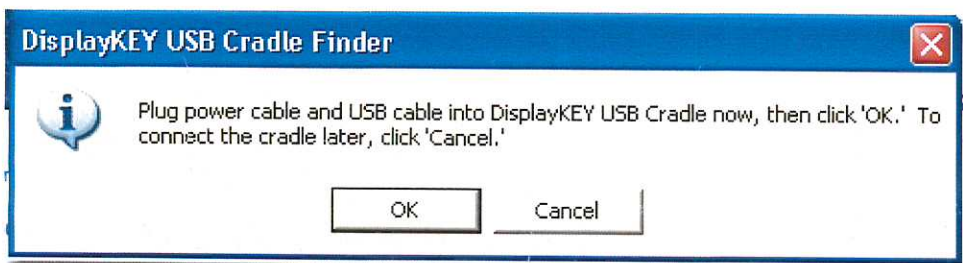
14. Click Next



15. Click Next



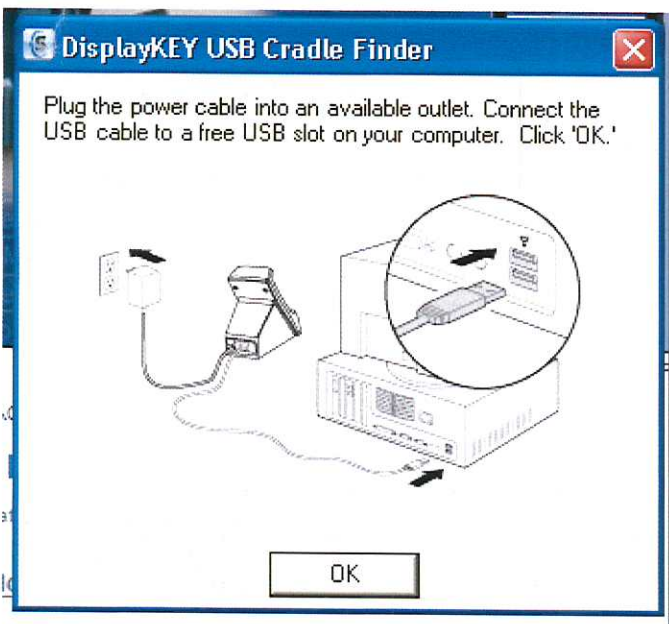
16. Plug in your USB cable.



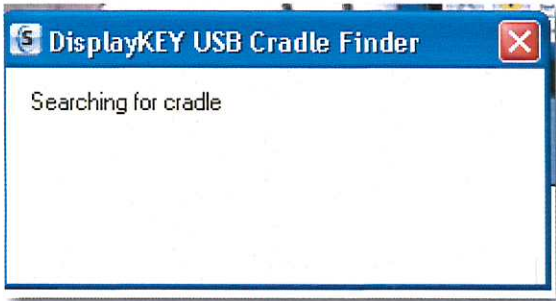
- a. This message should appear in the lower right corner of your display.
- b. **After** this message disappears click OK



17. Click OK



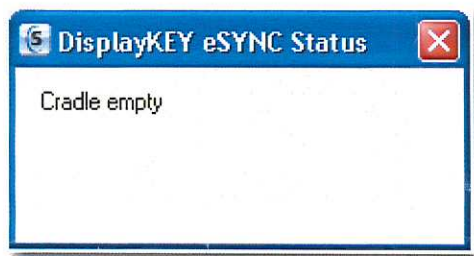
18. You should see something similar to the below screen shots.



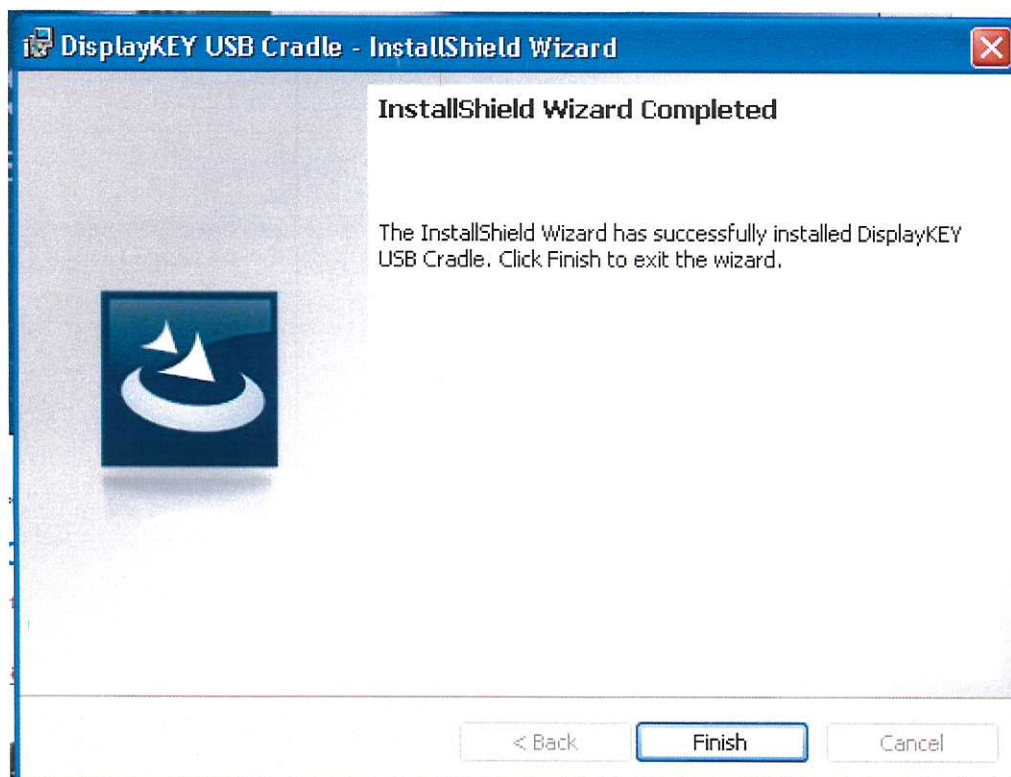
a. Click OK



- You will see this message if you do not have your key in the cradle.
- If the key is in the cradle you will see a syncing message.



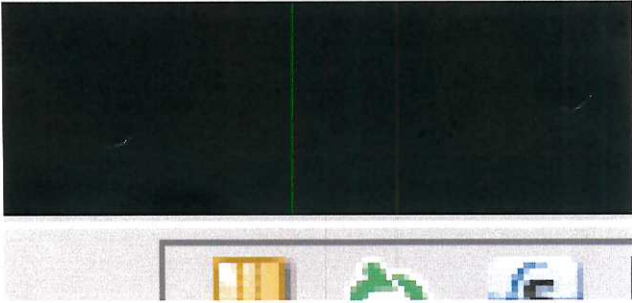
b. Click Finish.



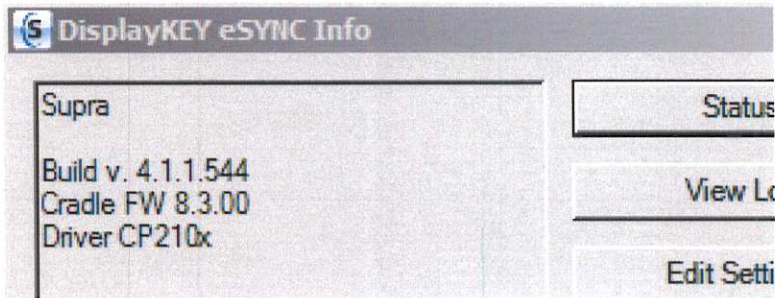
NOT FINISHED!!!! One more step to go... see the next page...

19. You must now configure the DNS settings

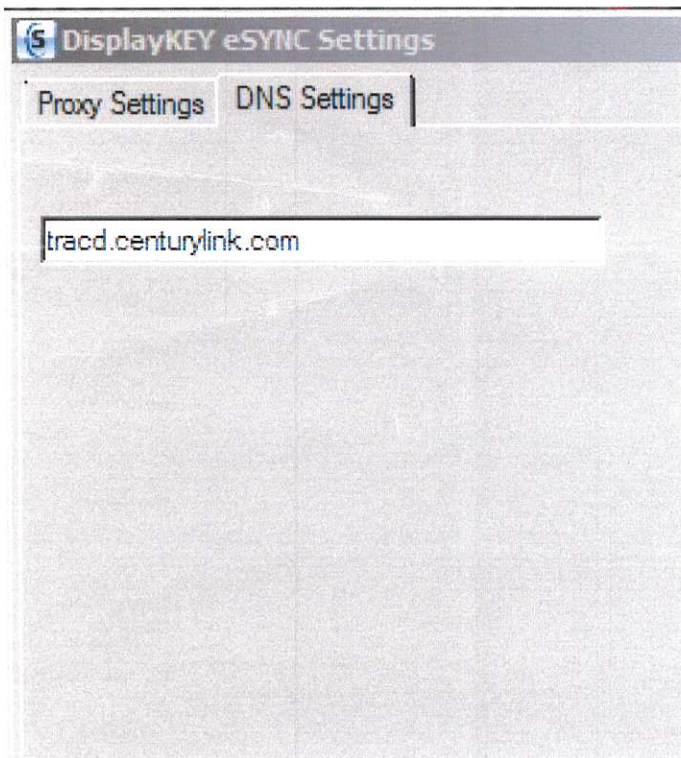
- a. On the lower right side of your system double click on the S icon.



- b. Click on the Edit settings.



- c. Click on the DNS settings table and fill in `tracd.centurylink.com` and click OK



- d. Place your key in the cradle